

LENIN PEAK 2021





It is not a commercial expedition (everyone is responsible for their safety and their decisions)

- Day 1. August 2 flight Madrid - Istanbul - Bishkek
- Day 2 . August 3 Biskek (shopping, food etc.) - Hotel
- Day 3. August 4 transfer to Ala Archa, climb to the refuge
- Day 4. August 5 ascent to a small bivouac refuge
- Day 5. August 6 Summit attempt at Semenova (4,895)
- Day 6. August 7 descent to the refuge
- Day 7. August 8 descent and return to Bishkek -Hotel
- Day 8. August 9 Flight to Osh - Hotel
- Day 9. August 10 C.B. transfer (tent and food included)
- Day 10. August 11 C.B - Ascension Pico Petrovskiy (4.830m.)
- Day 11. August 12 C.B.A (tent and food included)
- Day 12. August 13 2C.B.A. - rest, walk
- Day 13. August 14 C.B.A. - Field 1
- Day 14. August 15 Camp 1 - C.B.A.
- Day 15. August 16 C.B.A - rest
- Day 16. August 17 C.B.A - Camp 1
- Day 17. August 18 Field 1 - Field 2
- Day 18. August 19 Camp 2 - Summit - Camp 2
- Day 19. August 20 field 2 - C.B.A.
- Day 20. August 21 C.B.A - - C.B.
- Day 21. August 22 transfer to Osh - hotel
- Day 22. August 23 flight Osh -Biskek (hotel)
- Day 23. August 24 Resting day
- Day 24. August 25 Bishkek -Istanbul - Madrid

The price include:

- International flights (40kg. Baggage) with a rate that allows you to change dates or cancel with a small penalty.
- Internal flights Biskek- Osh (only includes 20Kg of luggage)
- 3/4 nights hotel in Bishkek
- 2 nights hotel in Osh
- 2 nights of refuge in Ala Archa

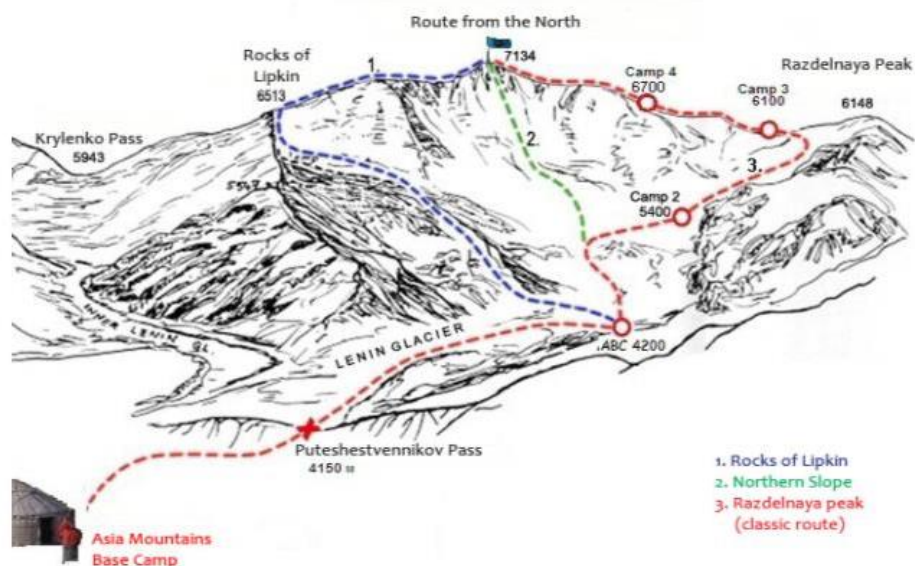
Three meals and shops at the C.B. and C.B.A. in Lenin Peak
All transfers.

There is the possibility for those who want to hire a Guide, porters, shops and food on Camps 1 and 2 of Lenin.

The ascent to Semenova is not excessively difficult, but you have to climb in the final part, there are more affordable ascents in the area such as Uchitel (4,552m.).



- normal route to Semenova Peak Tian-Shanski (4.895)



Lenin, in red normal route